

## EQUIPMENT AND SETUP OF MEETING ROOMS

### TECHNIQUE

#### OPTIONS:

- Screen: 2m x 1.60m + Projector: Sony model VPL ES3
- TV: TVLED067 - Smart TV LG UHD LED ThinQ AI 4K, 70 inches, 1.55m x 0.87m
- TV: Smart TV Samsung 65" 4K UHD LED, 1.44m x 0.81m

#### SOUND:

Mixer: Behringer Xenyx 802









Audio Speakers: 2 JBL columns (1000W)

Features: Bluetooth and built-in equalizer

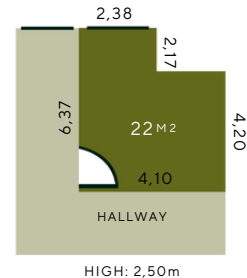
Microphones: 2 wireless microphones

Lavalier Microphones: 2 lapel microphones

#### FLIP CHART/WHITEBORAD

MEETING ROOMS	AUDITORIUM	CLASSROOM	U-SHAPED	DIRECTORY	BANQUET	BUFFET	COCKTAIL
							
<b>CORAL</b>	100	44	45	40	184	128	200
<b>RUBÍ</b>	15	10	9	12	-	-	-
<b>AMBAR</b>	60	30	26	32	40	32	50

#### RUBÍ:



#### AMBAR:



#### CORAL:

